

Registration



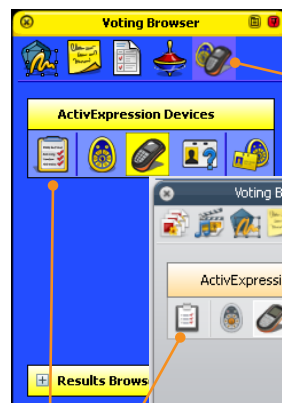
ActivInspire

Device registration is the process of telling the ActivHub which types of LRS device there are in the classroom, how many there are, and their names.

You need to register LRS devices **before** you begin a voting session.

You start registration from the Voting Browser in ActivInspire.

In Device Registration make sure that you select your ActivHub, then select either ActivExpression or ActiVote devices before you click **Register**.

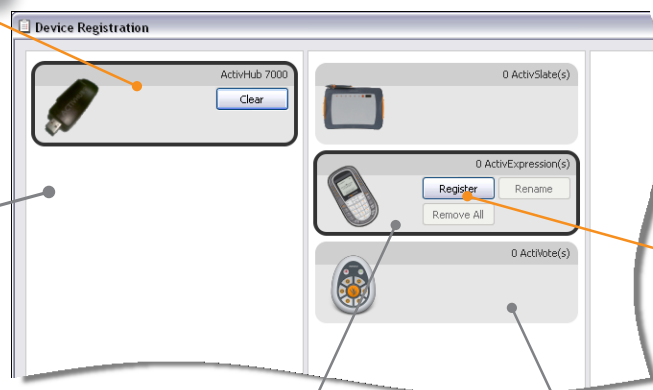


Select the Voting Browser

Start Registration

Select your ActivHub

Other ActivHubs may be displayed here



Click to register

Select ActivExpression devices

Select ActiVote devices



ActivInspire

There are several options for naming devices in ActivInspire.

The quickest way is to let ActivInspire allocate default names during registration.

Alternatively, you can let your students name their ActivExpression devices during registration.

You can rename both ActiVote and ActivExpression devices later.

Whichever option you choose, devices must be powered on and

within

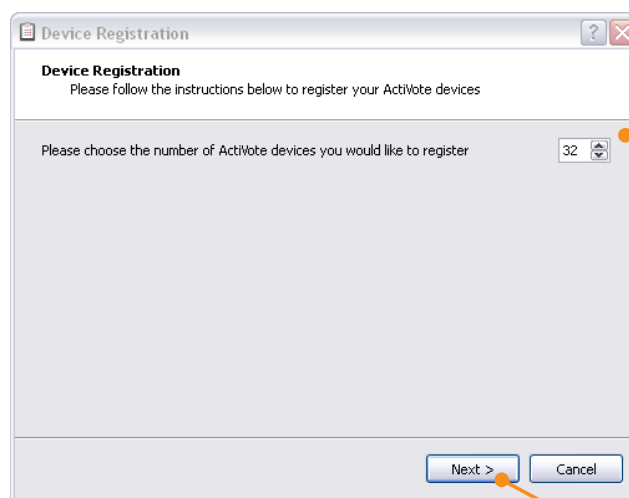
transmission

range of the

ActivHub.

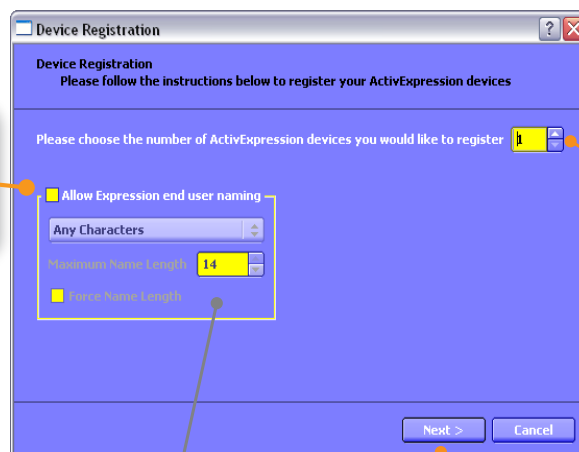
ActiVote

ActivExpression



Choose number of devices

Click to proceed



Check to let students name devices

Choose number of devices

Specify naming options if required

Click to proceed



ActivInspire

ActivInspire displays a 3-letter PIN code. All students must enter the correct PIN.



PIN to be entered by students

If you chose to let students name their ActivExpression device, they must enter the name now, using the hotkeys and keypad.

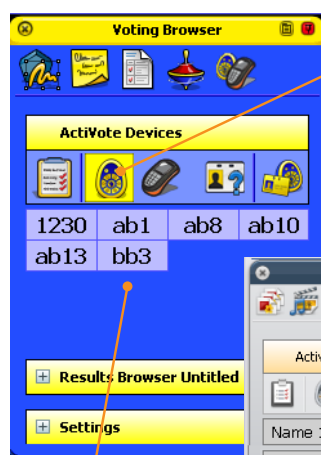
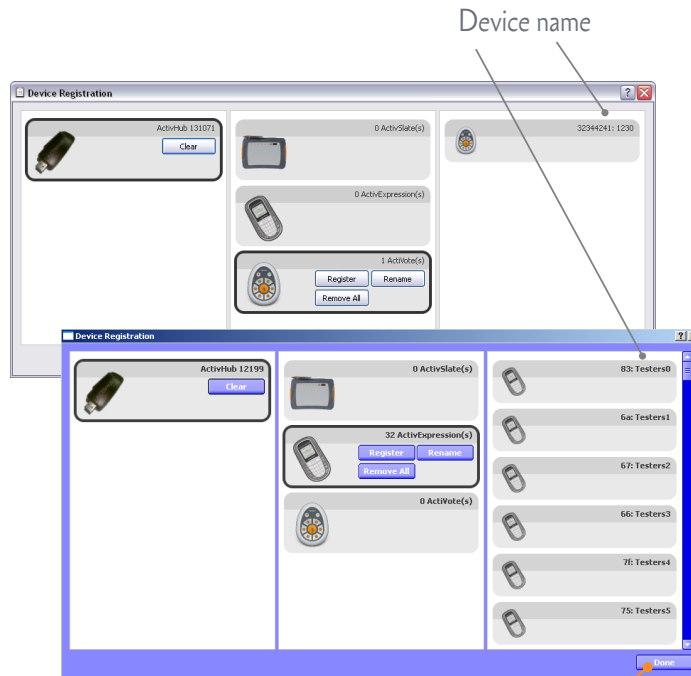


ActivVote

ActiveExpression



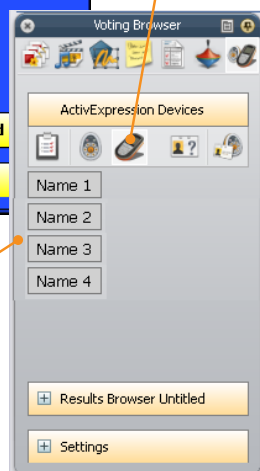
As soon as students enter the correct PIN, Device Registration in ActivInspire shows their devices as registered.



Select device type

Click to end registration

Registered devices



You can check the Voting Browser at any time to see the list of devices registered on your ActivHub.

Remember to plug in the ActivHub first.

You can register additional devices as necessary.

